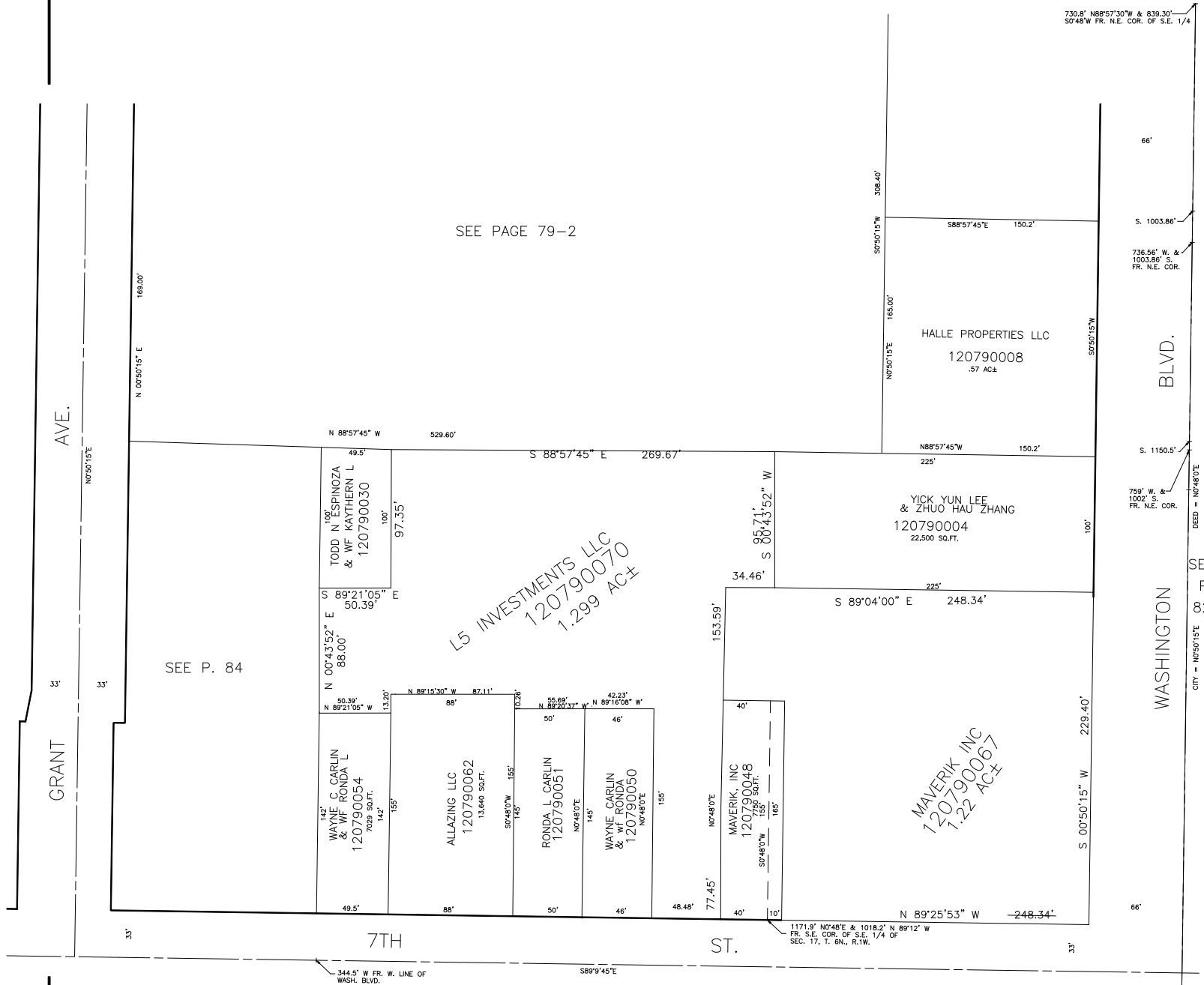


PART OF THE S.E. 1/4 OF
SECTION 17, T.6N.,R.1W., S.L.B.&M.

TAXING UNIT: 25

IN OGDEN CITY
SCALE 1" = 50'



SEE PAGE 79-2

SEE P. 84

L5 INVESTMENTS LLC
120790070
1.299 AC±

MAVERIK INC
120790067
1.22 AC±

HALLE PROPERTIES LLC
120790008
.57 AC±

YICK YUN LEE
& ZHUO HAU ZHANG
120790004
22,500 SQ.FT.

WAYNE C. CARLIN
& WF RONDA L
120790054
7029 SQ.FT.

ALLAZING LLC
120790062
13,660 SQ.FT.

RONDA L. CARLIN
120790051

WAYNE CARLIN
& WF RONDA
120790050

MAVERIK, INC
120790048
1257 SQ.FT.

TODD N. ESPINOZA
& WF KAYTHERN L
120790030

GRANT AVE.

WASHINGTON BLVD.

7TH ST.

ST.

730.8' N88°57'30"W & 839.30'
50'48"W FR. N.E. COR. OF S.E. 1/4

S. 1003.86'
738.56' W. &
1003.86' S.
FR. N.E. COR.

S. 1150.5'
750' W. &
1192' S.
FR. N.E. COR.

DEED = N0748'0"E

SEE P. 82

CITY = N050'15"E

344.5' W FR. W. LINE OF
WASH. BLVD.

S89°9'45"E

1171.9' N0748'E & 1018.2' N 89°12' W
FR. S.E. COR. OF S.E. 1/4 OF
SEC. 17, T. 6N., R.1W.